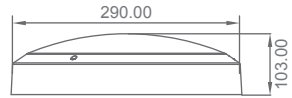
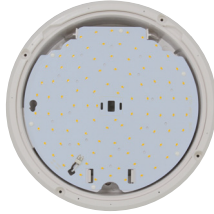


OPERATING MANUAL

Venus V290 - Basic

Important: Please read the instruction manual carefully prior to installation and keep it for future reference.



| Ordering code | Product | Power (W) | Function Description |
|---------------|----------------|-----------|----------------------|
| | Fitting series | | |
| V290 18 000 | V290 | 18 | Basic LED Fixture |

Mounting: Wall or Ceiling

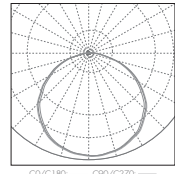
Light brief features:

Ra: >80

Life Time: 5 years

Light Source: LED SMD2835

Input: 220V-240V 50/60Hz



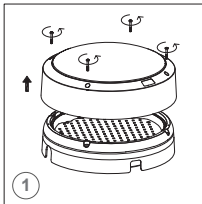
Accessories

| No. | Pic. | Qty. | Usage |
|-----|------|------|-------------------------|
| 1 | | 3 | Fix light |
| 2 | | 3 | Rawl Plug |
| 3 | | 1 | Vandal proof screw tool |
| 4 | | 3 | Plastic washer |
| 5 | | 1 | Cable clip |
| 6 | | 2 | Fix cable clip |

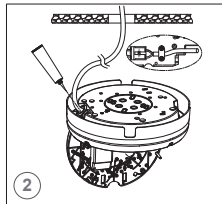
Color Temperature Code

| Code | Color temperature | CCT(K) | Lumen |
|------|-------------------|--------|-------|
| 30K | Warm White | 3000 | 1550 |
| 40K | Natural White | 4000 | 1650 |
| 50K | Cool White | 5000 | 1750 |

Installation

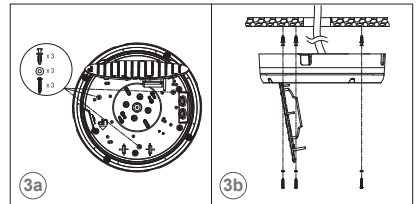


Unscrew the diffuser anti-clockwise and vertically remove it.

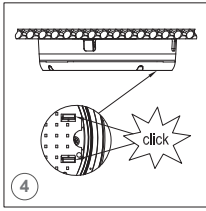


- a. Cut off the power. Thread the AC cable through the rubber plug to the fixture. Connect the L, N wire referring to the wiring diagram, then install the cable clip.
- b. Rubber plug must be coated with silicone glue to seal the gap and resist water.

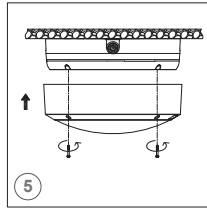
Note: silicone glue shall be prepared by user.



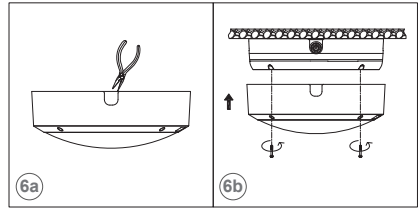
- a. Settle the installation hole's positions on ceiling/wall.
- b. Knock the rawl plugs into the pre-drilled holes on ceiling/wall. Wear plastic washers on self-tapping screws and tighten them to fix the fixture on ceiling/wall.



Fix the PCBA plate onto the clips on the base. If wiring from bottom, please refer to Step 5. If wiring from side, skip to Step 6.

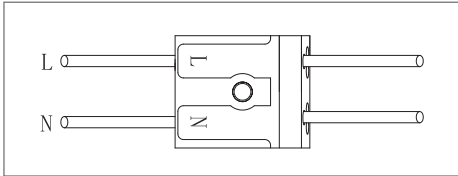


Mount the diffuser onto the base with screws.
Resume the power.



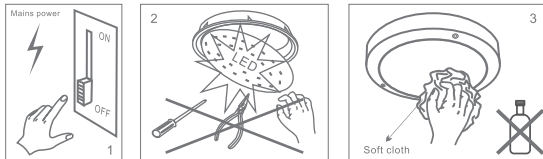
- a. Use pliers to knock out the wiring entrance along the outline on diffuser wall.
- b. Align the knock-out holes with the wiring-out positions on base, and mount the diffuser onto the base with screws.
- c. Resume the power.

Wiring



Maintenance

1. Cut off the main power first
2. Don't touch LED while maintaining or cleaning
3. Don't use chemical reagent to clean lamp.



Environmental protection: waste electrical products should not be disposed of with household waste. Please recycle where facilities exist. Check with your local authority or retailer for recycling advice.



Caution

1. The product must be installed by professional technicians and power supply must be cut off before installation.
2. The diameter for AC input wire is 0.75mm² (complying with 60245 IEC57), which complies with the latest IEE electrical standards or national standards.
3. Do not touch the electronic circuit and its components.
4. Contact an authorised technical service centre for any repairs possibly required use only original spare parts.
5. Do not touch LED while installing or maintaining.
6. Sealing the entrance hole with glue after install is needed.
7. The light source contained in this luminaire shall only be replaced by the manufacturer or his service agent or a similar qualified person.

