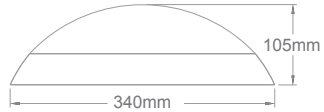


# OPERATING MANUAL

## Athos A340 - Basic

Important: Please read the instruction manual carefully prior to installation and keep it for future reference.



Ordering code	Product	Power (W)	Function Description
	Fitting series		
A340 15 000	A340	15	Basic LED Fixture
A340 22 000	A340	22	Basic LED Fixture

Mounting: Wall or Ceiling

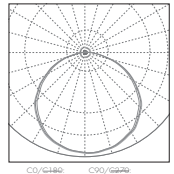
Light features:

Ra: >80

Life Time: 5 years

Light Source: LED SMD2835

Input: 220V-240VAC 50/60Hz



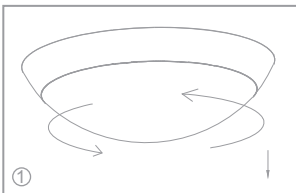
### Color Temperature Code

Code	Color Temperature	CCT(K)	Lumen	
			15W	22W
30K	Warm White	3000	1760	1760
40K	Natural White	4000	1870	1870
50K	Cool White	5000	1950	1950

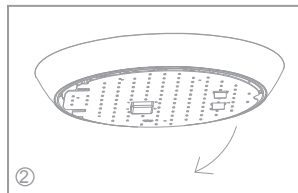
### Accessories

No.	Pic.	Qty.	Usage
1		3	Fix light
2		3	Rawl plug
3		3	Plastic washer

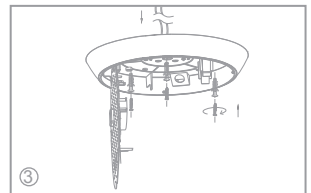
### Installation



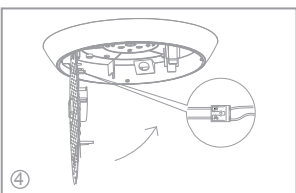
Twist to remove the diffuser.



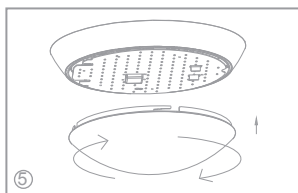
Unlock the lugs on PCBA.



Fix the base onto the ceiling/wall.

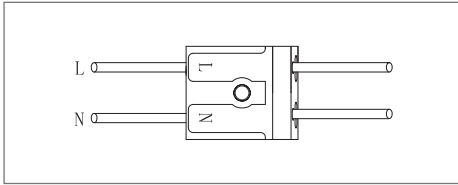


Wiring.



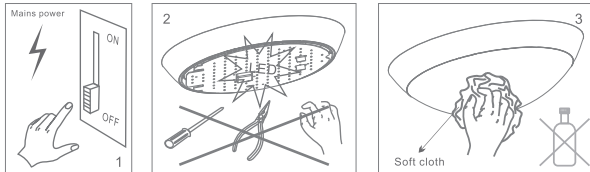
Mount the diffuser onto the base.

## Wiring



## Maintenance

1. Cut off the main power first
2. Don't touch LEDs while maintaining or cleaning
3. Don't use chemicals to clean the fixture.



Environmental protection: waste electrical products should not be disposed of with household waste. Please recycle where facilities exist. Check with your local authority or retailer for recycling advice.



## Caution

1. The product must be installed by professional technicians and the power supply must be cut off before installation.
2. The installation wiring must be at least 0.75mm<sup>2</sup> and wired in accordance with the latest IEE electrical regulations or the national requirements.
3. Do not touch the electronic circuit and its components.
4. Contact an authorised technical service centre for any repairs required and use only original spare parts.
5. Do not touch LEDs while installing or maintaining.
6. The LED light source can not be replaced.

