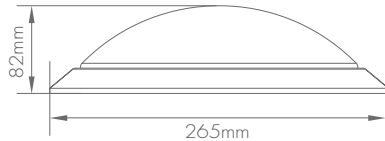


OPERATING MANUAL

Luna LA265 - Basic

Important: Please read the instruction manual carefully prior to installation and keep it for future reference.



Ordering Code	Product	Power (W)	Function Description
	Fitting Series		
LA265 12 000	Luna LA265	12	Basic LED Fixture

Mounting: Wall or Ceiling

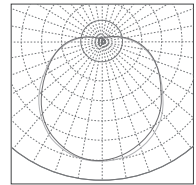
Light features:

Ra: >80

Life Time: 5 years

Light Source: LED SMD2835



Input: 220V-240V 50/60Hz



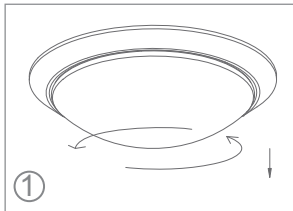
Color Temperature Code

Code	Color temperature	CCT(K)	Lumen
30K	Warm White	3000	960
40K	Natural White	4000	1008
50K	Cool White	5000	1058

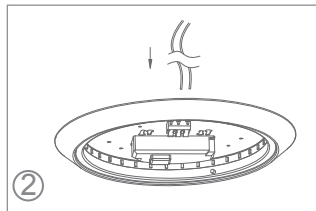
Accessories

No.	Pic.	Qty.	Usage
1		3	Fitting base
2		3	Rawl plug

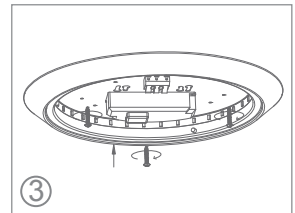
Installation



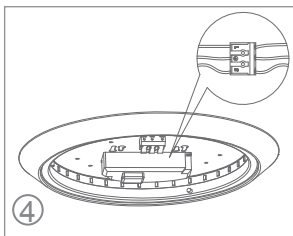
Remove the cover.



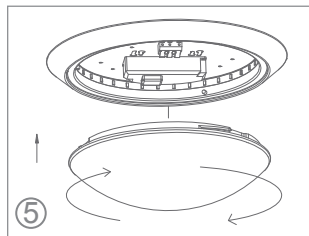
Power cord comes into the fixture.



Fixture housing onto the ceiling.



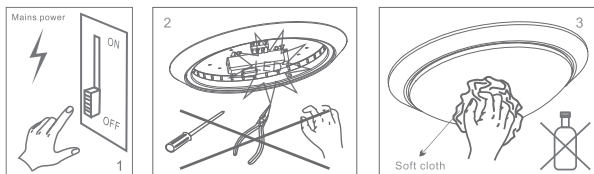
Wire connection.



Close the cover.

Maintenance

1. Cut off the main power first
2. Don't touch LEDs while maintaining or cleaning
3. Don't use chemicals to clean the fixture.



Environmental protection: waste electrical products should not be disposed of with household waste. Please recycle where facilities exist. Check with your local authority or retailer for recycling advice.



Caution

1. The product must be installed by professional technicians and the power supply must be cut off before installation.
2. The installation wiring must be at least 0.75mm² and wired in accordance with the latest IEE electrical regulations or the national requirements.
3. Do not touch the electronic circuit and its components.
4. Contact an authorised technical service centre for any repairs required and use only original spare parts.
5. Do not touch LEDs while installing or maintaining.
6. The LED light source can not be replaced.

