

# OPERATING MANUAL

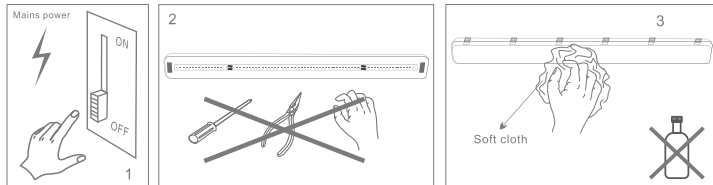
## Kronus - Basic

Important: Please read the instruction manual carefully prior to installation and keep it for future reference.

1. Switch off the power.
2. Fix the bracket into the ceiling.
3. Lift up the fixture until it reaches the bracket.
4. Let the power cord pass through the side hole and then connect it onto the terminal correctly. If rubber plug is used instead of water-proof connector, seal the puncture with glue to prevent water coming into fixture.
5. Hook the metal cord between LED diffuser and the base housing. Connect the output (DC) cables. Install the LED diffuser on the base housing, then lock the fixture with clips.
6. Switch on the power.

### Maintenance

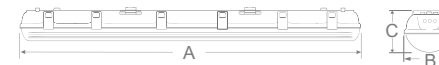
1. Cut off the main power first
2. Don't touch LED while maintaining or cleaning
3. Don't use chemical reagent to clean lamp.



Environmental protection: waste electrical products should not be disposed of with household waste. Please recycle where facilities exist. Check with your local authority or retailer for recycling advice.

### Caution:

1. The product must be installed by professional technicians and power supply must be cut off before installation.
2. The diameter for AC input wire is 0.75mm<sup>2</sup> (complying with 60245 IEC57), which complies with the latest IEE electrical standards or national standards.
3. Do not touch the electronic circuit and its components.
4. Contact an authorised technical service centre for any repairs possibly required use only original spare parts.
5. Do not touch LED while installing or maintaining.
6. Sealing the entrance hole with glue after install is needed.
7. The light source contained in this luminaire shall only be replaced by the manufacturer or his service agent or a similar qualified person.



	A	B	C
KS600	600mm	95mm	83mm
KS1200	1200mm	95mm	83mm
KS1500	1500mm	95mm	83mm

KS600



KS1200



KS1500



Ordering Code	Product Fitting series	Power (W)	Function Description	Ordering Code	Product Fitting series	Power (W)	Function Description
KS600 9 000	KS600	9	Basic Tri-proof Light 1~10V dimmable& Switch-DIM Tri-proof Light	KS600 18 000	KS600	18	Basic Tri-proof Light 1~10V dimmable& Switch-DIM Tri-proof Light
KS600 9 DIM				KS600 18 DIM			
KS1200 18 000	KS1200	18	Basic Tri-proof Light 1~10V dimmable& Switch-DIM Tri-proof Light	KS1200 36 000	KS1200	36	Basic Tri-proof Light 1~10V dimmable& Switch-DIM Tri-proof Light
KS1200 18 DIM				KS1200 36 DIM			



Ordering Code	Product	Power (W)	Function Description	Ordering code	Product	Power (W)	Function Description
	Fitting series				Fitting series		
KS1500 25 000	KS1500	25	Basic Tri-proof Light 1~10V dimmable& Switch-DIM Tri-proof Light	KS1500 50 000	KS1500	50	Basic Tri-proof Light 1~10V dimmable& Switch-DIM Tri-proof Light
KS1500 25 DIM				KS1500 50 DIM			

Mounting: Damp environments or places where there is smoke and dust.

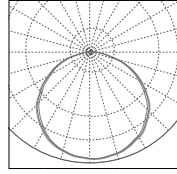
Light brief features:

Ra: >80

Life Time: 5 years

Light Source: LED SMD2835

Input:220V-240V 50/60Hz



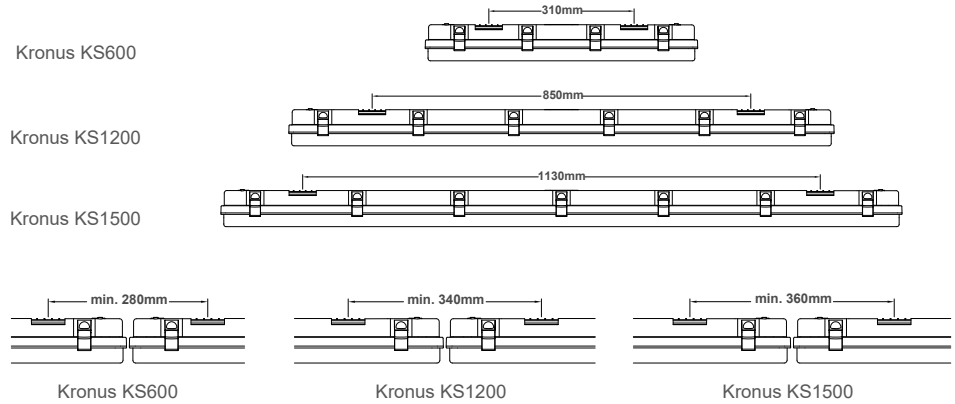
**Color temperature code:**

Fitting Series	Code	Color temperature	CCT(K)	Lumen	Fitting Series	Code	Color temperature	CCT(K)	Lumen
Kronus KS600 9W	30K	Warm White	3000	1110	Kronus KS600 18W	30K	Warm White	3000	2260
	40K	Natural White	4000	1150		40K	Natural White	4000	2340
	50K	Cool White	5000	1180		50K	Cool White	5000	2370
Kronus KS1200 18W	30K	Warm White	3000	2260	Kronus KS1200 36W	30K	Warm White	3000	4530
	40K	Natural White	4000	2340		40K	Natural White	4000	4700
	50K	Cool White	5000	2370		50K	Cool White	5000	4780
Kronus KS1500 25W	30K	Warm White	3000	3100	Kronus KS1500 50W	30K	Warm White	3000	6400
	40K	Natural White	4000	3200		40K	Natural White	4000	6600
	50K	Cool White	5000	3270		50K	Cool White	5000	6700

**Accessories**

No.	Pic.	Qty.	Usage
1		4	Fix bracket
2		4	Rawl plug
3		2	Bracket: fasten fixture
4		2	Water-proof connector
5		2	Rubber plug

Fitting series	Pic.	Qty.	Usage
Kronus KS600		8	Clip: lock fixture
Kronus KS1200		12	
Kronus KS1500		14	



**Installation:**

